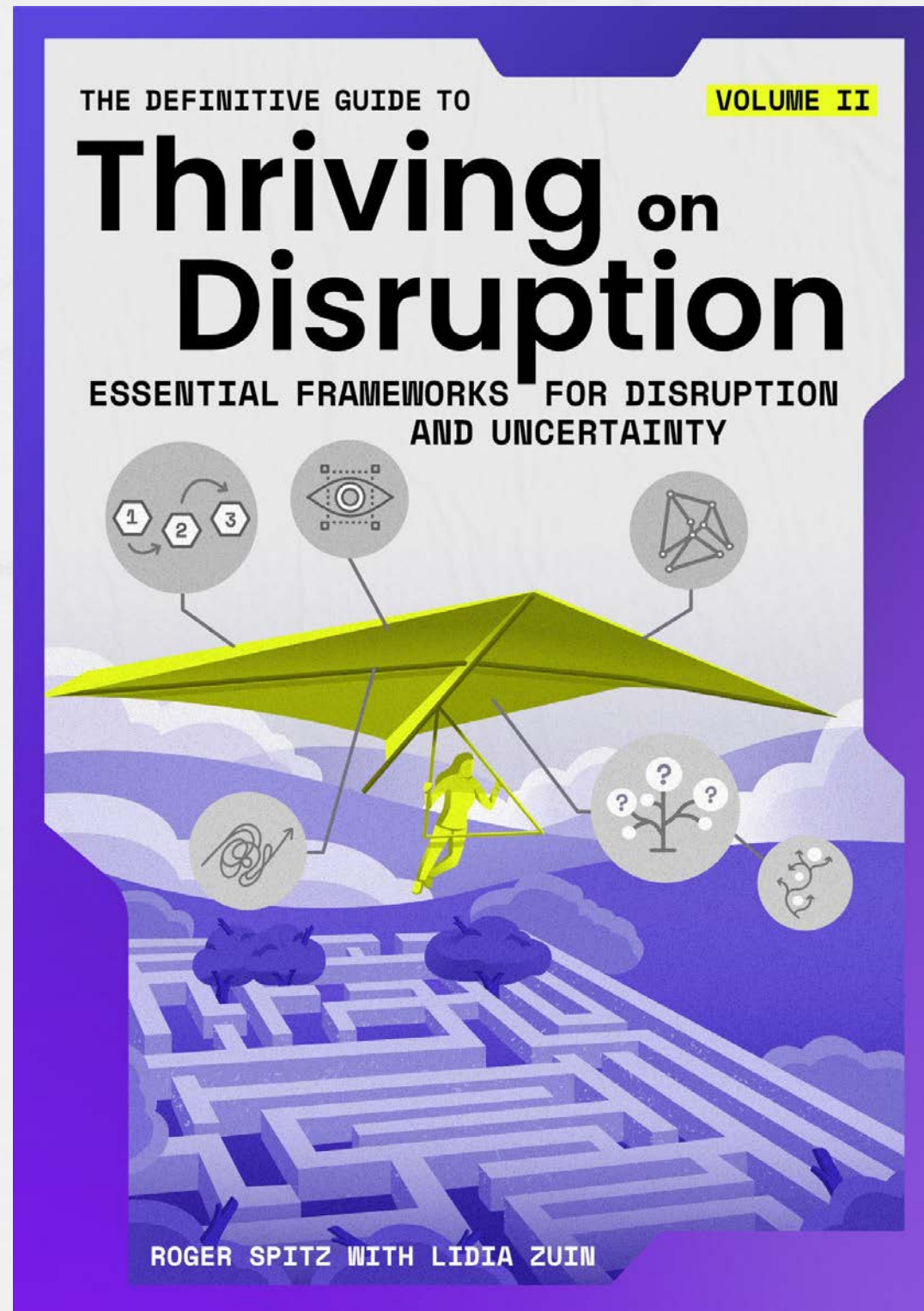


VOLUME II: Essential Frameworks for Disruption and Uncertainty

Practical frameworks to help you and your business **stay relevant in the 21st century**



Enjoy these sample slides from Volume II of *The Definitive Guide to Thriving on Disruption*. To purchase the Guidebooks, including **over 500 exclusive illustrations and toolkits**, check out www.thrivingondisruption.com

Eastern Philosophy & Zen Buddhism

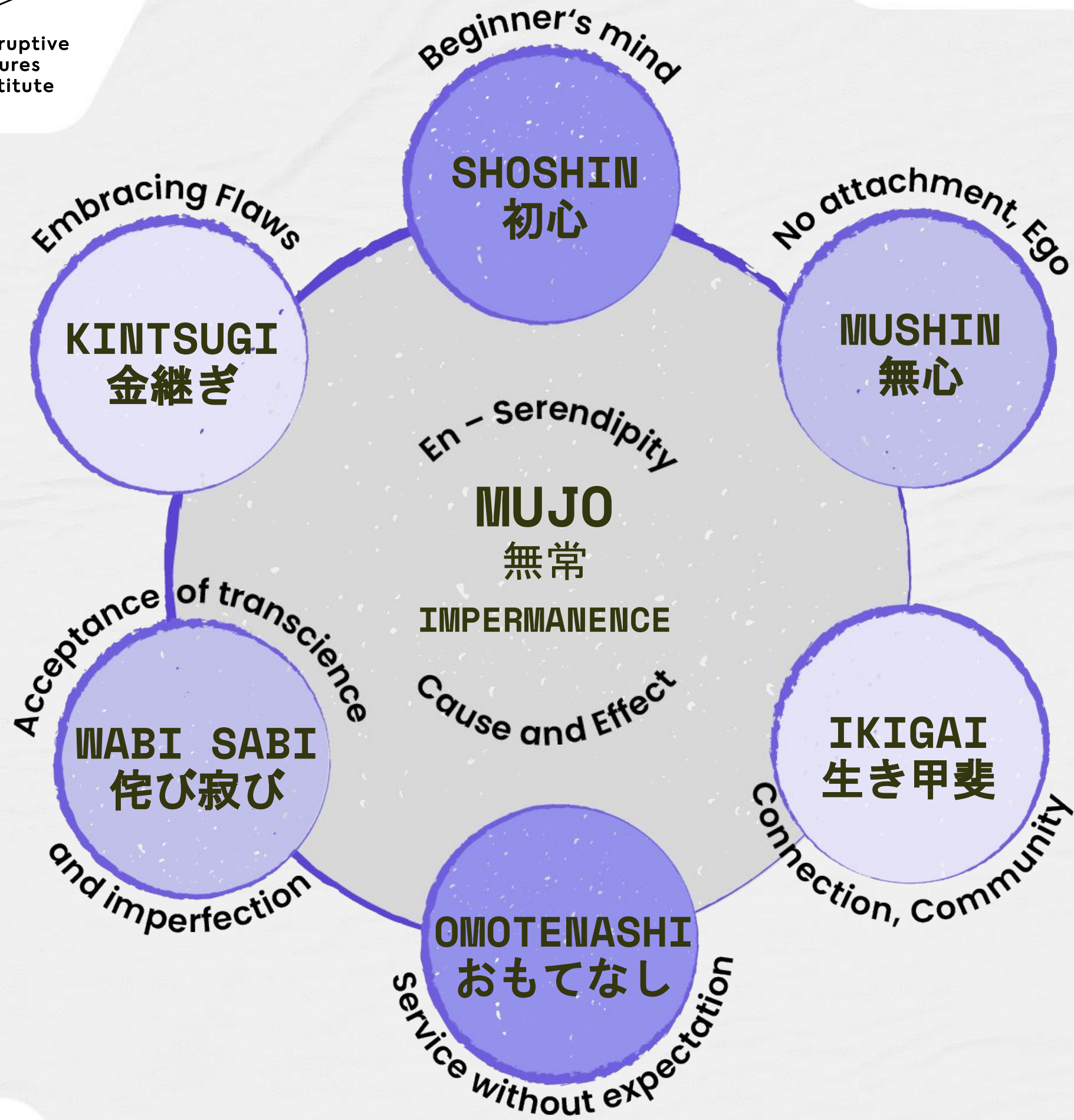
- Disruption is simply ***mujō***: constant change all the time. Nothing is permanent – except impermanence
- To improve our **comfort with impermanence, systemic transformation, and change**, we can learn from Eastern Philosophy



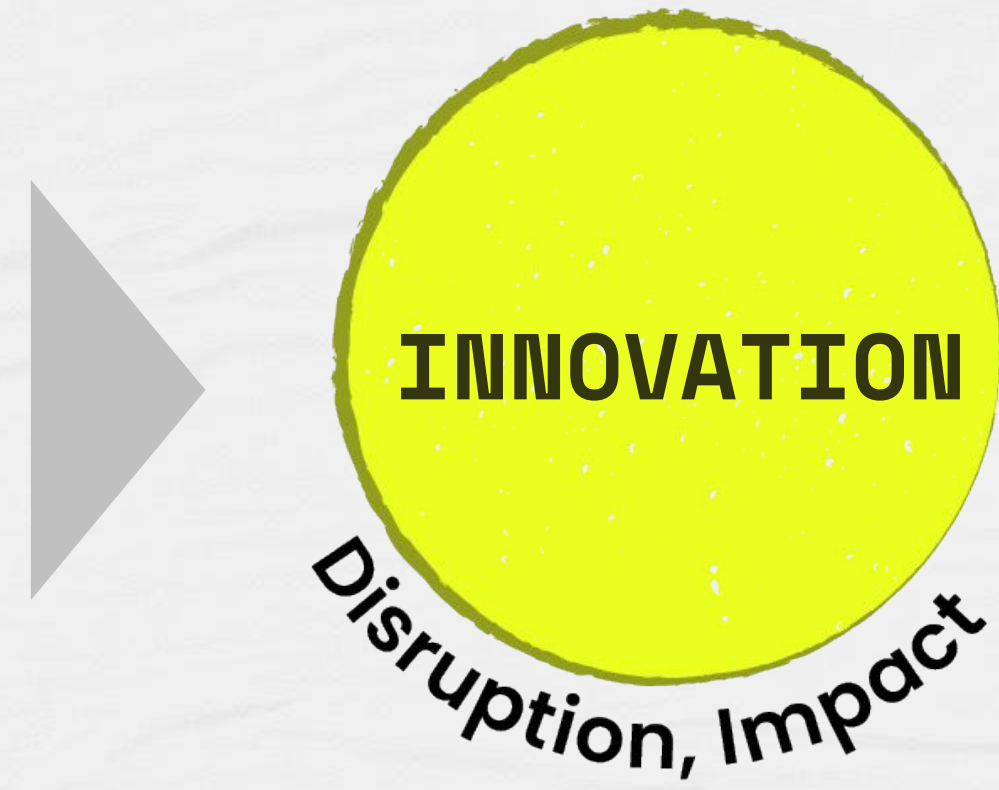
Eastern philosophy not only understands the true nature of our world as impermanent, but also appreciates how to leverage on impermanence for innovation and impact.

EXCERPT FROM VOLUME II,
ESSENTIAL FRAMEWORKS FOR DISRUPTION AND UNCERTAINTY

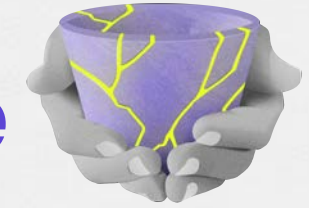




Mujō Cause & Effect Map



Relevance from Zen Buddhism Perspective



Overriding Theme	Definition	Examples	Implications
SHOSHIN 初心	Beginner's mind	Steve Jobs, Jeff Bezos, Shunryu Suzuki Dogen	Allows fresh perspectives, new combinations, and innovation
MUSHIN 無心 MUGA 無我	No mind, no ego	Zen philosophy	Allows one to have beginner's mind
MUJO 無常	Impermanence	Yuval Harari Osamu Tezuka	Nothing is permanent - therefore, unwise to attach to anything
IKIGAI 生き甲斐	The reason to get out of bed	Mieko Kamiya Shigeaki Hinohara Setouchi Jakucho	Tapping into one's <i>ikigai</i> allows one to thrive in a disruptive world
OMOTENASHI おもてなし	Hospitality w/o expecting anything in return	No tip system in Japan Tea Ceremony 2020 Tokyo Olympics theme	Genuine joy to serve others Deeply interrelated to <i>ikigai</i>
WABI SABI 侘び寂び	<i>Wabi</i> : solitude in nature <i>Sabi</i> : elegantly weathered	Decaying barn	Worldview centered on acceptance of transience and imperfection
KINTSUGI 金継ぎ	Pottery repaired by mending the areas of breakage with lacquer and powdered gold	<i>Kintsugi</i> pottery	Metaphor: embrace flaws & imperfection Trial and error / failure is critical to innovation

The Ingredients to Agency



- ✓ **UNCERTAINTY:** Appreciate uncertainty as the underpinning to our agency
- ✓ **WIDE OPEN FUTURES:** Our choices and actions define our beingness
- ✓ **EXPERIENCE:** Learn through explorative tinkering, experimental trial & error
- ✓ **INDETERMINATE AND UNKNOWABLE:** Define our essence as it emerges
- ✓ **INVENTION:** As we are free, we invent what is yet to be determined
- ✓ **ENTHUSIASM:** Regain confidence that we are builders and makers
- ✓ **DISRUPTION:** Embrace change as it creates more agency, freedom & choice

Steps to Assuming a Beginner's Mind

DON'T JUDGE

FIND PATTERNS

REALLY LISTEN

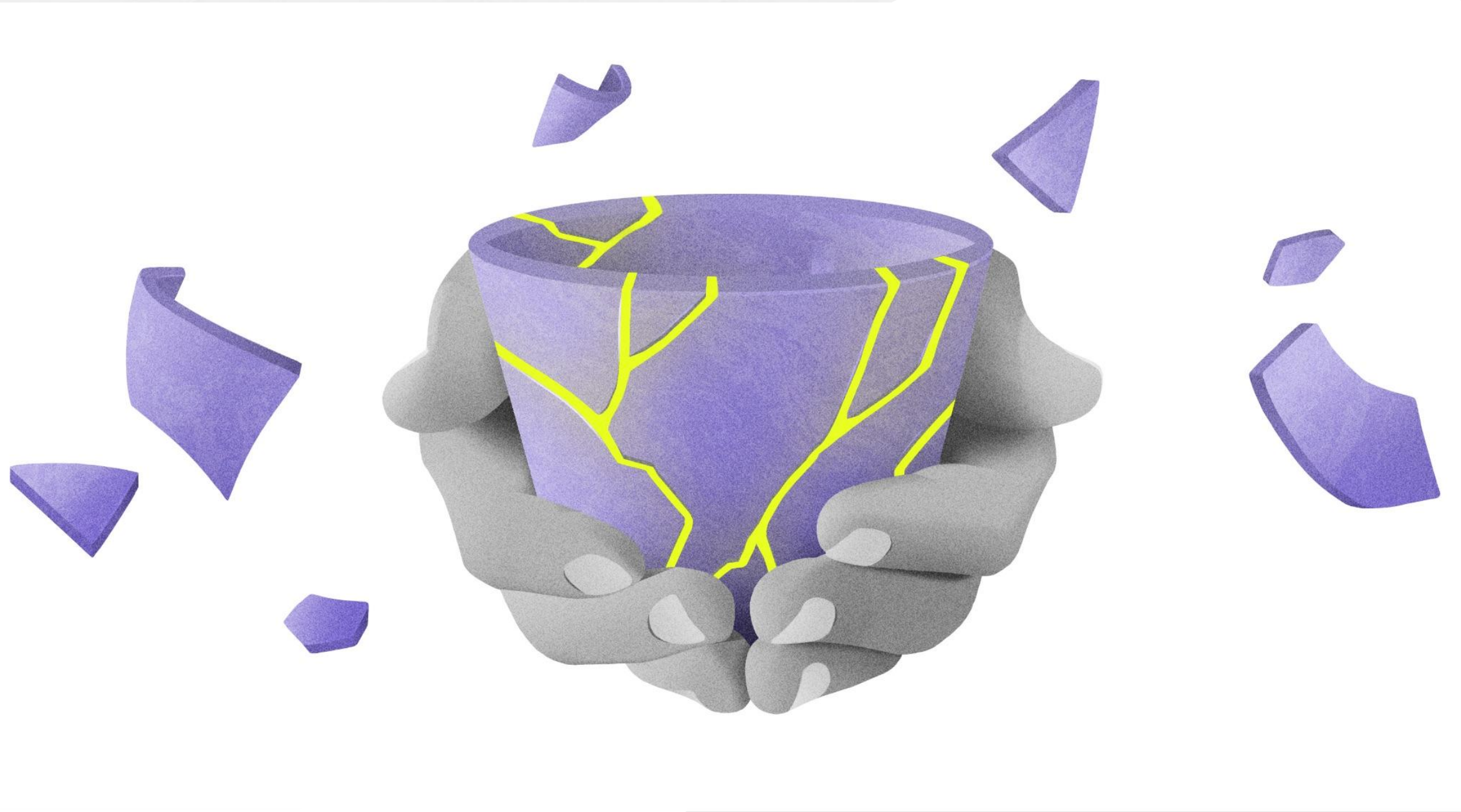
QUESTION EVERYTHING

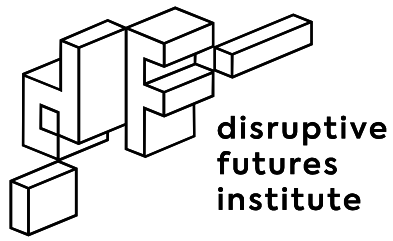
BE GENUINELY CURIOUS



Shoshin,
The Beginner's Mind
CALLIGRAPHY: NAE HAYAKAWA

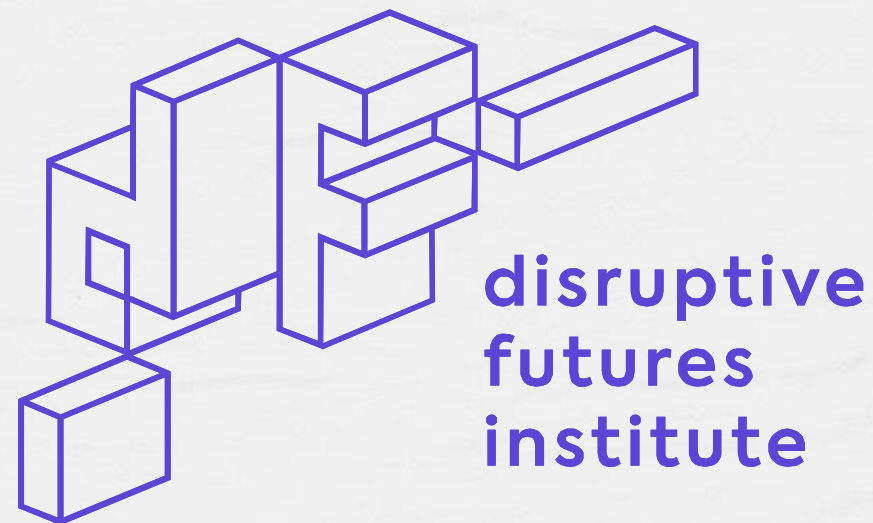
Kintsugi





Meet the Disruptive Futures Institute

Trends continue...
until they don't.



Contact us at: info@disruptivefutures.org

Publisher of *The Definitive Guide to Thriving on Disruption*, the Disruptive Futures Institute is a **think tank** offering:

- Books, **Research** & Publishing
- **Executive Education**
- **Keynotes**, Masterclasses & Courses
- **Rethinking Governance** from Boardrooms to Policymakers

Stay connected with the Disruptive Futures Institute in San Francisco:



INSTAGRAM
[@disrupt_futures](https://www.instagram.com/disrupt_futures)



TWITTER
[@disrupt_futures](https://twitter.com/disrupt_futures)



YOUTUBE
DFI Channel



LINKEDIN
Disruptive
Futures Institute



MEDIUM
Disruptive Futures
Institute



FACEBOOK
DFI Facebook Group



PINTEREST
Disrupt Futures